

Visualisation VP01

View from Co. Cork designated scenic route 15 in the townland of Knockahorrea East, north of Rockchapel. The view is 3.8 km north of the nearest existing Taubeg turbines (T6)

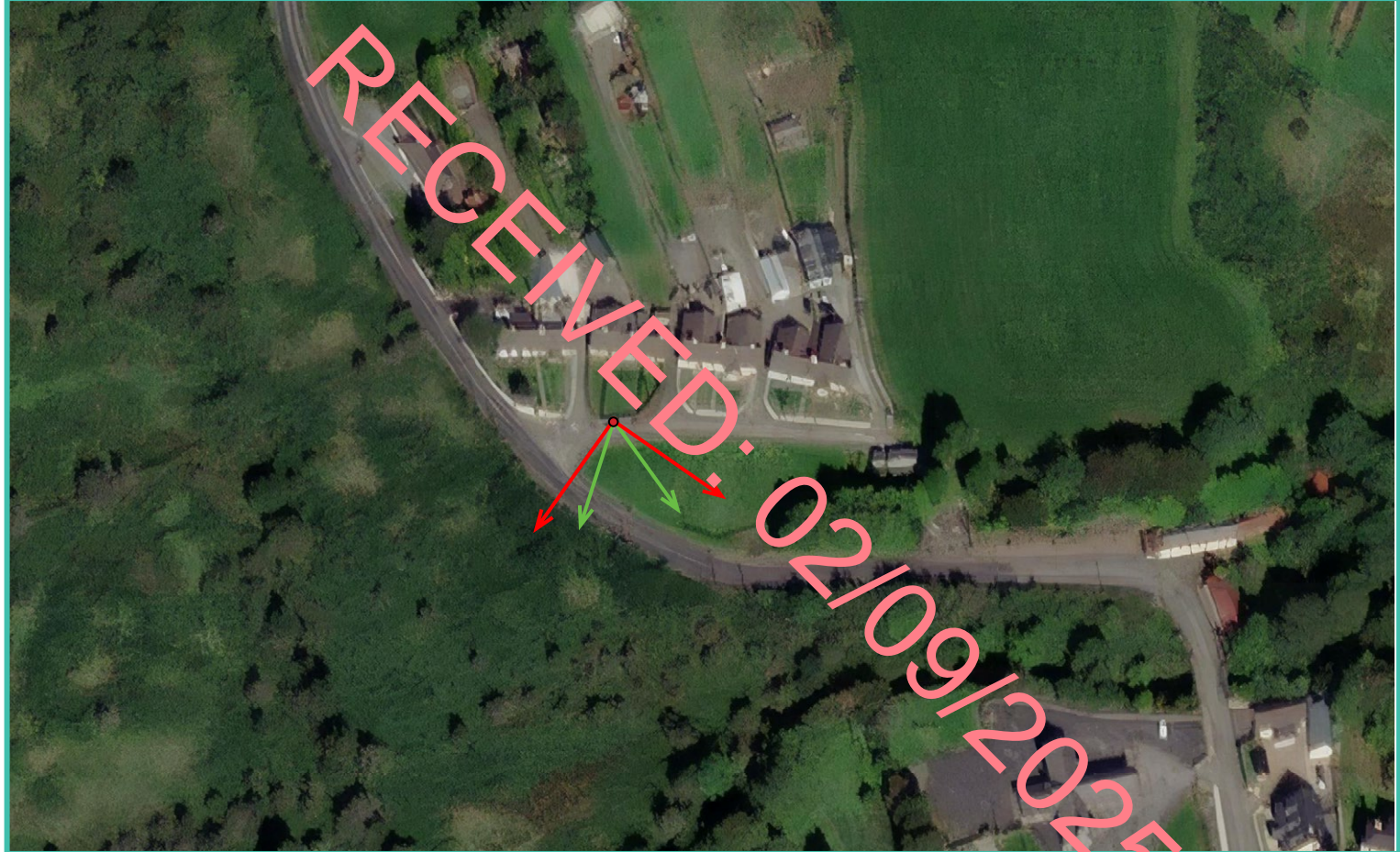
View point grid reference	E 521805 N 616028
Date of image taken	20.09.2024
Time of image taken	09:16
View point elevation	212m
Angle of Views	90° / 53.5°
View Direction (Image Centre)	170°
Horizontal extent of existing Taubeg Wind Farm	12°
Distance to nearest existing Taubeg turbine	3.8km (T6)
Number of existing Taubeg turbines visible	6/11
Turbine Hub Height	67m
Turbine Tip Height	108.2m
Turbine Rotor Diameter	82.4m
Camera & Lens	Canon 5D Mark III / Full Frame Sensor with a 50mm Lens
Tripod	Manfrotto 190X extended to approx 1.5m.
Guidance	* Visual Representation of Development Proposals, Landscape Institute Technical Guidance Note 06/19, 2019
Map Licence	© Bing Maps



View point relative to 10km radius.



View point relative to wind farm site.



Detail of view point location.

Map Legend

- Area shown in 90° view (Red double arrow)
- Area shown in 53.5° view (Green double arrow)
- View Point (Red dot)

Wireline Legend

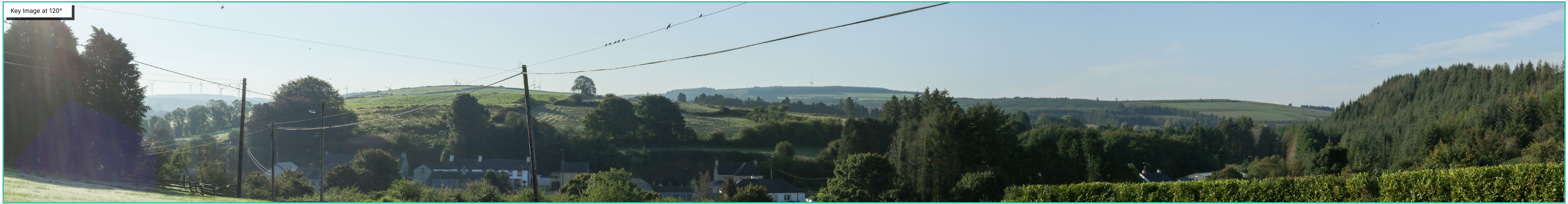
- Existing Taubeg Wind Farm (Teal line)
- Existing Knockacummer Wind Farm (Teal line)
- Existing Glentane Wind Farm (Teal line)

Prepared by  
MKO  
Planning & Environmental Consultants  
Tuam Road, Galway.

Tel: (091) 73 56 11  
E-mail: info@mkoireland.ie  
Website: www.mkoireland.ie



90° View Extent

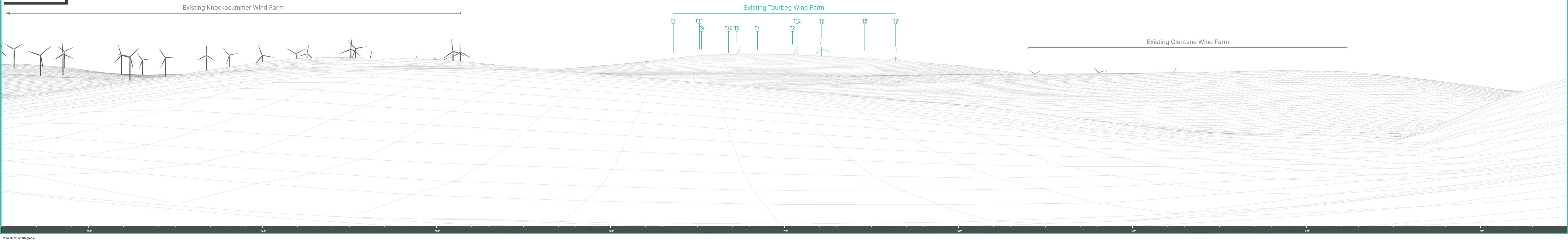


53.5° View Extent





Matching Wireline



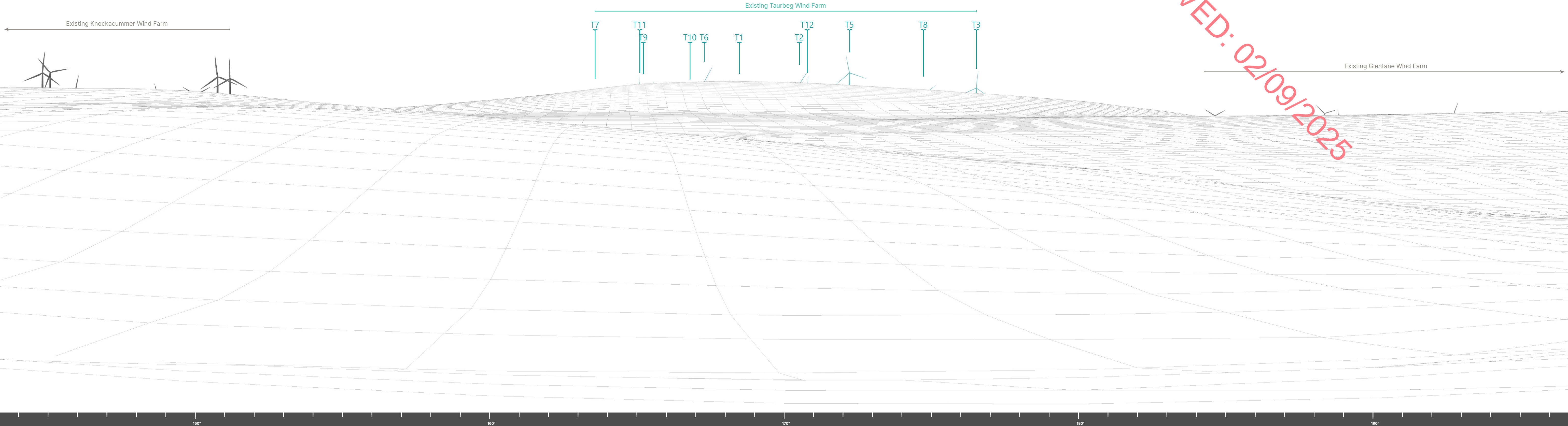


Proposed View at 53.5°

RECEIVED: 02/09/2025







0' Included Vertical Angle (18.2°)

81'

18.2°